

TB-558

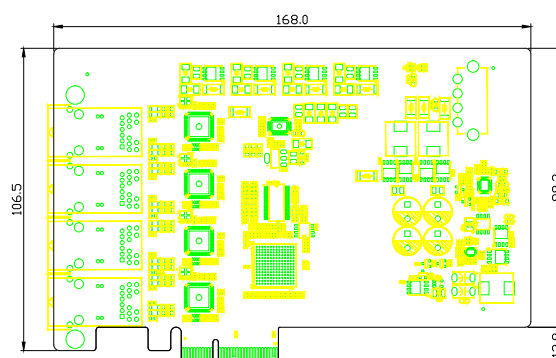
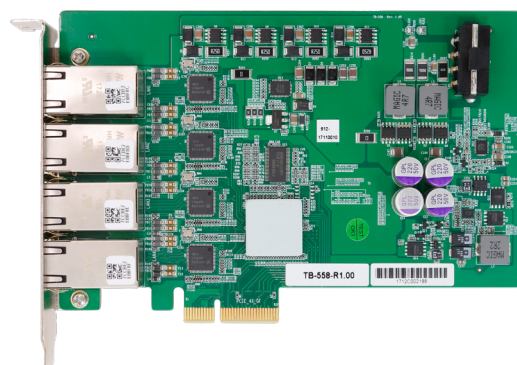
4-Port x4 PCIe Gigabit Power over Ethernet Frame Grabber Card with PoE capability

Features

- 4-Port x4 PCIe interface to support a total bandwidth of 1GB/s
- Supports four (PoE4) independent GigE Ports
- Compliant with IEEE 802.3af
- Single maximum power consumption 23.5W
- Internal DC 12V Power Input
- External DC 19-36V Power Input

Specifications

Bus Interface	x4 PCIe
Dimension	168 mm x 98.25 mm
Operating Temperature	-20°C~70°C
Cable Requirement	CAT-5e or CAT-6 cable, 100 meters maximal
Internal Power	Single maximum power consumption 23.5W Total maximum power 66W
External Power	Single maximum power consumption 23.5W Total maximum power 83.6W
Gigabit Ethernet Port	4-Port 4 x Gigabit Ethernet ports by Intel WG210AT controllers
Maximum Support bandwidth	Each port can 1000 Mb/s bandwidth



TB-559

8-Port USB 3.0 Host Adapter Card with 4 x Independent USB 3.0 Controllers

Features

- 8-Port x4 PCIe Gen. 2 Interface to Deliver 2GB/s Bandwidth
- 8 x USB 3.0 ports by 4 x Independent NEC/Renesas μ PD720202 Host Controllers
- Compliant with USB 3.0 specification Rev. 1.0 and Intel xHCI Specification Rev. 1.0
- Supports Windows XP/7/8/10 and Linux
- External DC 24V Input for Option

Specifications

Bus Interface	x4 PCIe
USB Ports	8 x USB 3.0 ports Compatible with USB 2.0
Dimension	168 mm x 111 mm
Operating Temperature	-20°C~70°C
USB Controller	4 x NEC/Renesas μ PD720202 Host Controllers Compliant with Universal Serial Bus 3.0 specification Revision 1.0 Compliant with Intel xHCI specification Revision 1.0
USB Connectors	4 x on-board USB 3.0 Type-A connectors with fix points for cable tie
Power Requirement	Maximal 5.5A @ 12V from directly PCIe bus for USB devices External DC 24V Input for option
TB-559	8-Port USB 3.0

