

# SBC-7118

EPIC

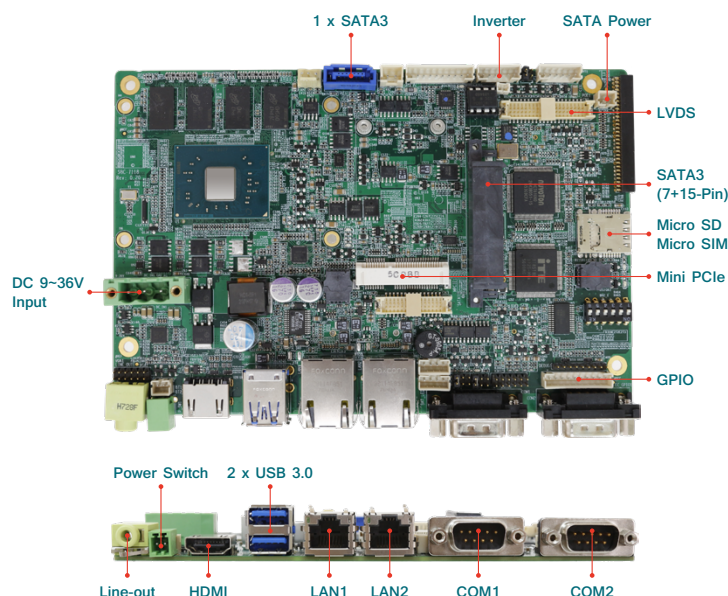
4" EPIC, Onboard Intel Pentium N4200(1.10GHz) / Celeron N3350(1.10GHz) Processor, Onboard 4GB/8GB DDR3L, VGA/HDMI/LVDS, TPM 2.0

## Features

- Intel Pentium N4200(1.10GHz) / N3350(1.10GHz) Processor
- Onboard 4GB/8GB DDR3L 1600MHz
- Three Independent Display Support with 4Kx2K
- Support Smart Battery
- Wide Operating Temperature, Support -40°C~85°C
- Wide Range DC 6~36V Input
- TPM 2.0 (Trusted Platform Module) Support

## Packing List

- 1 x SBC-7118 4" SBC
- 1 x CR2477 Battery



## Specifications

### System

Form Factor	4" EPIC
Processor	Onboard Intel Pentium N4200 Processor (2M Cache, 1.10GHz) Onboard Intel Celeron N3350 Processor (2M Cache, 1.10GHz)
System Chipset	SoC
System Memory	Onboard 4GB/8GB DDR3L 1600MHz
BIOS	AMI/UEFI BIOS

### Display

Controller	Intel HD Graphics Series
VGA Interface	1 x VGA
TTL/LVDS Interface	1 x 18/24-bit Dual Channel LVDS
HDMI Interface	1 x HDMI
Resolution	Up to 4096 × 2160 for VGA Up to 1920 × 1080 for LVDS Up to 3840 × 2160 for HDMI

### Mechanical & Environment

Board Size (L x M)	170 mm x 113 mm
Gross Weight	TBD
Operating Temperature	-20°C~70°C (-4°F~158°F)
Storage Temperature	-40°C~85°C (-40°F~185°F)
Humidity	10%~90%, non-condensing, operating
Certificate	Meet RoHS 2.0/CE/FCC Class A

### Expansion

Expansion	1 x mini PCIe (shared with mSATA)
-----------	-----------------------------------

### Power Management

Power Input	Wide range DC 6~36V input
Power Connector	1 x 3-Pin power input connector

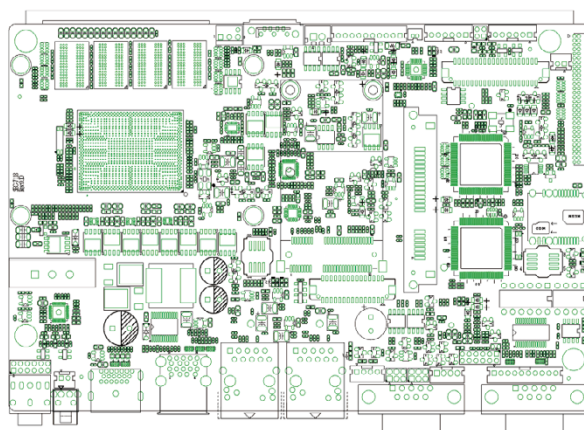
### Ordering Information

SBC-7118	4" EPIC, Intel Pentium N4200 / Celeron N3350 SoC, onboard 4G/8G DDR3L, 18/24-bit dual channel LVDS, SBC-7118
TB-528 Series	I/O Board for SBC-7118

### I/O

Super I/O	ITE IT8528E Fintek F81216AD
Ethernet	2 x GbE ports(RJ45) with Intel I210 Controller
USB	2 x USB 3.0 external stack ports 1 x USB 2.0 via CN1 1 x USB 2.0 via CN2 2 x USB 2.0 via CN3 1 x USB 2.0 internal for mini PCIe
Serial	1 x RS-232/422/485 port, DB-9 connector for external, pin 9 with 5V/12V/Ring select (with Auto flow control) 1 x RS-232 port, DB-9 connector for external, pin 9 with 5V/12V/Ring select 2 x UART for expansion connect 2 x RS-422/485 pin header
GPIO	8-bit digital I/O by header (4 x DI, 4 x DO)
Storage	2 x SATA3 Connectors 1 x Micro SD Slot (via Micro SD/Micro SIM Combo Slot)
SIM	1 x Micro SIM Slot (via Micro SD/Micro SIM Combo Slot)
Audio	Support Audio Via Realtek ALC269-VB 1 x Audio Phone Jack 1 x Audio Header by 2 x 6-Pin header, Line in/Line out/MIC in with Amplify Supply up to 2W(4Ω) Speaker
Smart Battery	Support 3 Serial Li battery by 10-Pin header
Battery	1 x 2-Pin header support CR2477 (1000mAH)
Watchdog Timer	Watchdog timeout can be programmable by software support 1~255 sec

### Dimension



Industrial Motherboard

Embedded Single Board

Core Module and Baseboard

Accessory